



RYLSTATIC is the Ultimate concept in Firefighting Nozzles, it is a Patented Design made by TIPSA as a result of continuous Research and Development.

RYLSTATIC is an improved alternative to fixed bumper teeth and turning teeth turbine that improves firefighting nozzles in the following points:

- Less friction loss
- Improved FOG, more Uniform with smaller water droplets. Bigger Humidity Power
- Ease of maintenance
- Solid Protection Shield

1) Less Friction Loss

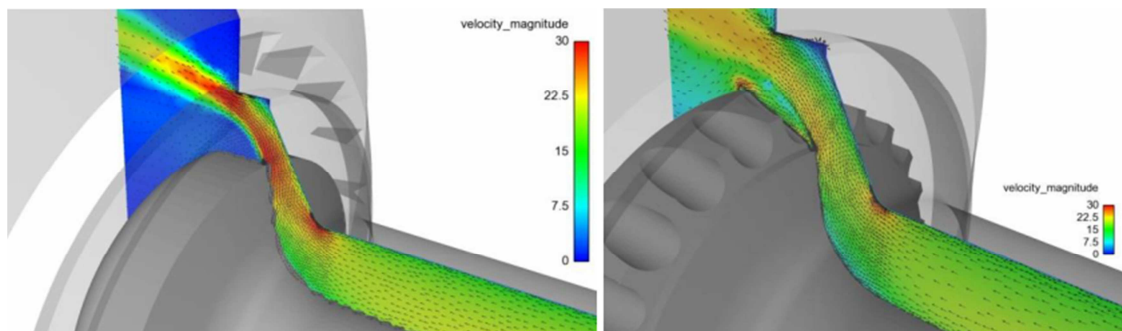


Image 1: Velocity of Water (left – spinning teeth, right – RYLSTATIC)

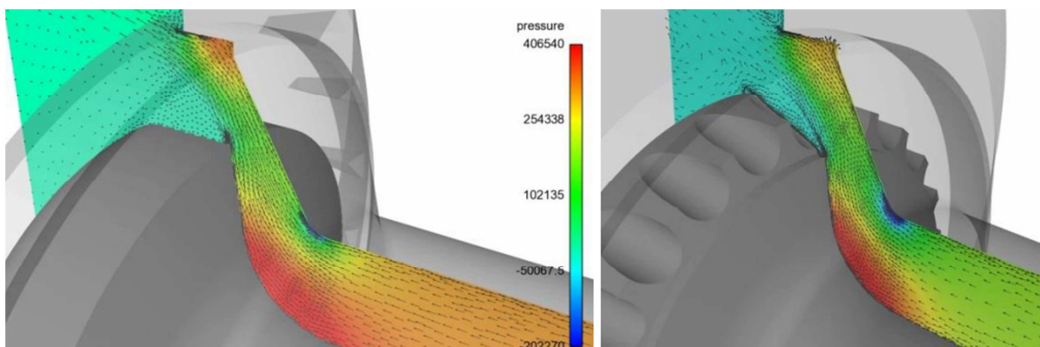


Image 2: Static Pressure distribution (left – spinning teeth, right – RYLSTATIC)

2) Improved FOG, more uniform with smaller water drops. Bigger Humidity Power.

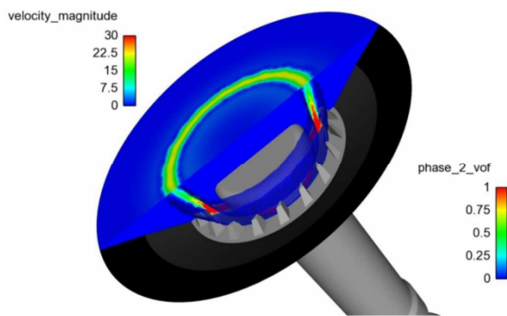


Image 3: Speed Magnitude vs Turbulence Intensity (before spinning Teeth turbine)

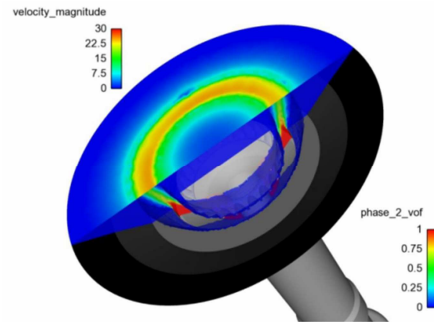


Image 4: Speed Magnitude vs Turbulence Intensity (RYLSTATIC)

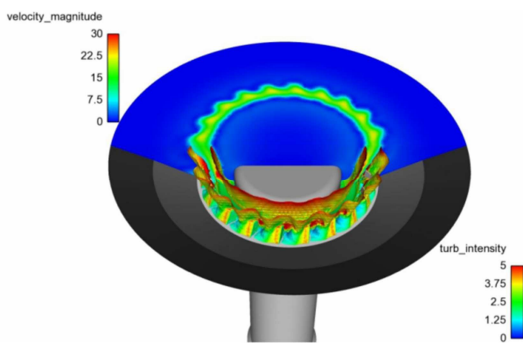


Image 5: Speed Magnitude vs Turbulence Intensity (spinning Teeth turbine)

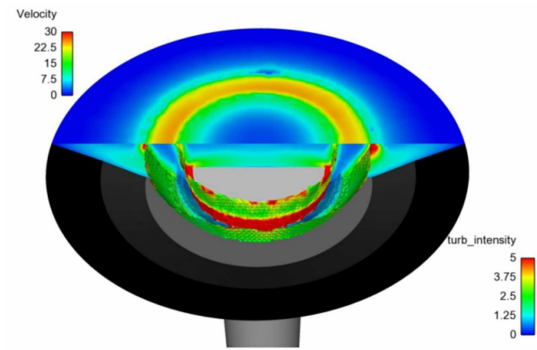


Image 6: Speed Magnitude vs Turbulence Intensity (RYLSTATIC)

The sooner the water starts its mixture with air, the better the FOG will become. The water drops are smaller but we have maintained the effective reach of the nozzle in FOG Positions.

3) Ease of Maintenance

With RYLSTATIC you do not have to pay attention to this point since it does not require any maintenance job.



Contact details:

TIPSA – Técnicas e Ingeniería de Protección S.A.U

T. +34.936.021.818

www.tipsa.com

tipsaex@tipsa.com

Available Models:

BD 550, BD 1330, BD 1560, BD 3012, BD 7515, BD 9520, BD 12250

(**) All Blue Devil nozzles has been designed and produced to accomplish with the requirements of NFPA 1964 and UNE EN 15182-1 / UNE EN 15182-2 Type 3.